

High End Mag Stripe & Bar Code Readers

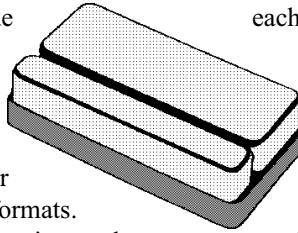
Models: 4100-MSC/L, 4100-BHD/L

General

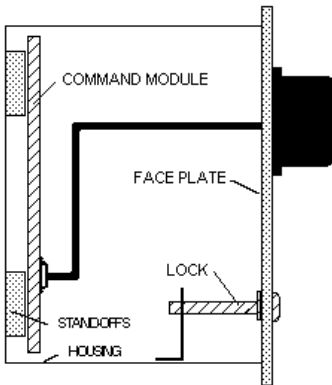
The Model 4100-BHD/L is a general purpose bar code swipe reader capable of reading low, medium, and high density bar codes. The Model 4100-MSC/L is a magnetic stripe reader capable of reading most formats. The Model 4100-BM is a swipe reader capable of reading either bar code or magnetic codes in the same reader.

Installation

Installation and wiring is the same for each model indicated above.



Readers should be shielded from direct rain and dripping water. For areas exposed to constant and severe weather conditions, silicon sealer should be used to keep moisture from penetrating behind the read head where it can enter the electronics.

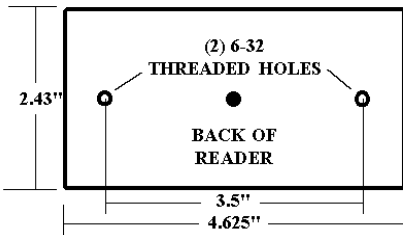


When the self-contained housing is ordered, the read head is pre-mounted to the locking face plate.

For wall surface mounting, an optional mounting adapter plate is available.

Reader To Command Module Wiring

The supplied pigtail may be extended to approximately 20'. Use 6 conductor #22 non-twisted cable with an over-all shield.



READER	MODULE
--------	--------

WHITE	4
GREEN	10
ORANGE	18
RED	19
BLUE	20
SHIELD	21
YELLOW	22