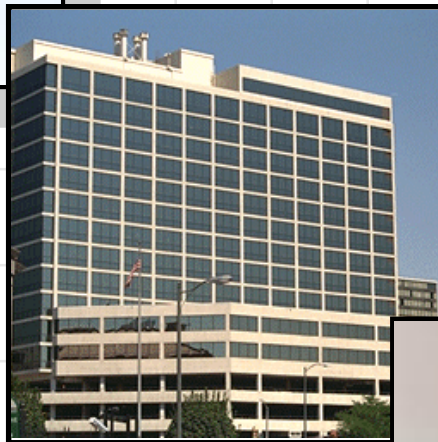


WHEN YOU NEED THE PERFORMANCE OF A "PC"

BUT THERE'S NO PLACE TO PUT ONE



**A MINIATURE SECURITY COMPUTER
THAT OUTPERFORMS MANY "PC" BASED SYSTEMS**



- CONTROLS 1-127 CARD READERS
- 65,000 CARDHOLDER CAPACITY
- STORES UP TO 10,000 TRANSACTIONS
- LOCAL PROGRAMMING WITH A CARD DECK
- HIGH SPEED REMOTE PROGRAMMING VIA DIAL-UP
- INSTANT DIAL-UP UNLOCK OF REMOTE SITE DOORS
- DATE, TIME, AND HOLIDAY ACCESS & UNLOCK LEVELS

SYSTEM HIGHLIGHTS

CARD ACCESS

The Smart Cartridge software lets you determine the access status of every cardholder; when they can enter, which days, which doors, and which holidays. It can also be programmed for secure and free access periods by automatically unlocking and re-locking specified entry points on a day, date, and time basis.



The Software is designed to grow when you grow. It will control as many cards, and as many entry points as you will ever need. Card readers of any of the popular technologies simply connect to a common two pair cable for Smart Cartridge control.

PARKING MANAGEMENT

The Smart Cartridge is the perfect solution for parking control, particularly in remote locations and harsh environments. It can perform most of the functions of a full blown "PC" based system, but do it in an enclosure that is small enough to fit in a reader or gate housing.

It includes every variation of Anti-Pass-Back with selectable Soft or Hard enforcement at either or both entrances or exits with valet and staff exemption levels. For lots without exit readers, the Smart Cartridge may be ordered to include Timed Anti-Pass-Back re-cycling.



ELEVATOR FLOOR ACCESS CONTROL

With our optional 16 Relay Output Module, the software will let you designate exactly which floors, and during which times and days each cardholder may gain floor access. You can program free public access days and times, and secure days and times, and like all other user defined parameters, you can program holiday exceptions, and specific date ranges which require special programming scenarios.

The system will control virtually any number of floors and any number cars with each cardholder programmed for access to any combination of floors and cars.



THREE WAYS TO PROGRAM THE SMART CARTRIDGE

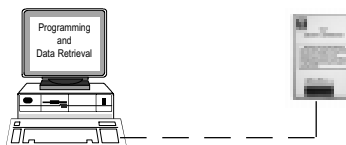
Card Programming Deck

Our unique Card Programming Deck lets you Void or Re-Validate any card instantly from any reader connected to the Smart Cartridge without interrupting access control at other readers. Just insert a sequence of numbered cards, and finish with the VOID or RE-VALIDATE card.



Direct Connect To A "PC"

Just plug the Smart Cartridge into any "PC" or Lap Top for programming and data retrieval. They're so inexpensive, a spare Cartridge can be rotated to remote locations if desired.



Dial-Up

Dial it up from any "PC" using our optional Phone Interface and high speed modem. You can instantly **unlock a door** at a remote site, make programming changes, and download transaction data from the Smart Cartridge to your "PC".



SOFTWARE HIGHLIGHTS

CARDHOLDER MANAGEMENT

We've adopted the industry dBase standard for managing the system. This means you can use your own dBase program, or its files to maintain the access control system. The Smart Cartridge software has its own built-in dBase program which allows you to define the kind of data you want to maintain about each cardholder, and the design of the display screen. There are default data entry screens for those who don't want to bother. There is absolutely no simpler or better way to maintain cardholder records than with dBase, and we use it to insure compatibility with video I.D. systems, or existing personnel data bases.

CARDHOLDER DATA			
Bud Toye	12345		
<small>CARDHOLDER NAME</small>	<small>CARD NUMBER</small>		
STREET: 2 Wrangler Lane			
CITY: Bell Canyon	STATE: CA ZIP: 91307		
H.Phone: 344-8893	W.Phone: 882-4000		
VEHICLE: '29 Ford	LIC: BUD TOYE		
SECURITY LEVEL ASSIGNMENTS			
LEVEL: 1	LEVEL: 2	LEVEL: 3	LEVEL: 801
MEMO: This guy has lost three cards			

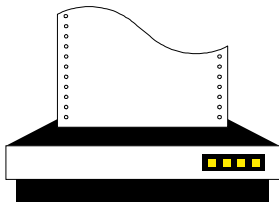
SECURITY LEVELS & TIME ZONES

Defining exactly how you want the system to respond to card entry requests takes only a few minutes. Security Levels are used to create access status groupings. You can define as many Levels as you wish. Level 1 might be defined to include all doors, every day, all day. Any cardholder who enjoys unlimited access would simply be assigned to Level 1. A more restrictive level might be only three entry points, 5 days a week, from 8:00 to 5:00. You can even define Levels that automatically start on a specific date, and expire on another for temporary personnel. Every Level can be automatically adjusted for holidays and day light savings time.

SECURITY LEVEL DEFINITIONS	
SECURITY LEVEL #:	1
Reader Locations:	01 02 03 04 05 07
Weekdays:	Mo Tu We Th Fr Sa Su Holidays
Time Span:	24 Hours per Day
Date Span:	None

ACTIVITY REPORTS

Depending upon the amount of optional memory, the Smart Cartridge can store up to 10,000 transactions which may be retrieved directly by a "PC", or via dial-up phone line.



You can create instant displayed or printed reports of the data using any combination of selection criteria. You may want records from a specific door, or only the records for a specific cardholder during a specific time period. You can retrieve the data using time and date spans, and you can send the data to a dBase file for compatibility with Time & Attendance reporting software.

For systems involving one or more remote sites, the optional Automatic Mass Programming feature can be set to dial each remote site at a pre-set time to update Smart Cartridges at remote locations.

All cardholder records are maintained in a single database file. These cardholders may be authorized for access at one or more sites. When programming changes to the database are made, the software detects which sites are affected by the programming changes, and then calls to update only those specific sites.



A call log is created providing a permanent record of site programming which indicates if the call was successful or not.

SPECIFICATIONS AND FEATURES

SPECIFICATIONS

SMART CARTRIDGE: Controls one or more readers: 5.25" H x 3.75" W x .625" D.

TELEPHONE PROGRAMMING INTERFACE: Needed for remote telephone programming: 5.25" H x 3.75" W x .625" D.

EXTERNAL 9600 BAUD MODEM: Required for remote programming.

COMPUTER: For "PC" programming. IBM 386 PC or compatible, color monitor, RS-232 Port, 40 megabytes hard disk space, 1 megabyte RAM memory. Hayes compatible modem required for phone programming. Printer is optional but necessary for hard copy log.

DIRECT PROGRAMMING INTERFACE: Includes RS-232 converter, pigtail connections, and 5 volt power supply.

COMMAND MODULE: One or two reader Modules available. Input is 12-24 Volts DC (Plug-In supply provided). Module board dimensions: 7.5" H x 5.625 W x .750 D (19 x 14.3 x 2 CM). Module box size: 7" H x 9" W x 2" D (17.8 x 23 x 5 CM)

READERS: All popular technologies available. See individual specifications for models and optional housings.

16 INPUT MODULE: For alarms or space count inputs. Input is 24 Volts AC or DC. Module box size: 7" H x 9" W x 2" D (17.8 x 23 x 5 CM)

DUAL I/O MODULE: Provides 2 inputs, and 2 outputs. Input is 24 Volts AC or DC. Module board dimensions: 7.5" H x 5.625 W x .750 D (19 x 14.3 x 2 CM). Module box size: 7" H x 9" W x 2" D (17.8 x 23 x 5 CM)

16 RELAY OUTPUT MODULE: Programmable outputs for elevator control or scheduled events. Input is 24 Volts AC or DC. Module box size: 7" H x 9" W x 2" D (17.8 x 23 x 5 CM)

ANNUNCIATOR MODULE: Provides momentary relay closures for incoming alarms. Input is 24 Volts AC or DC. Module board dimensions: 7.5" H x 5.625 W x .750 D (19 x 14.3 x 2 CM). Module box size: 7" H x 9" W x 2" D (17.8 x 23 x 5 CM)

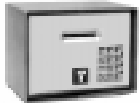
FIELD WIRING: Two twisted pair #22 with an over-all shield. Maximum length including stubs is 4,000 feet. In-line boosters are available for runs of any distance. Twisted pair phone line wire is also suitable. All industry standard communication media such as Fiber Optic and RF links may be used.

SYSTEM FEATURES

- Software**
- Compatibility with user's own dBase files
 - 65,000 Cardholder capacity
 - Up to 100 Security Access Levels
 - Programmable Unlock of any entry point
 - Dial-up Unlock of any entry point
 - 32 user defined holiday exceptions
 - Function Selectable Passwords
 - Restricted level Passwords
 - Task Switch loads other programs
 - Remote push button unlock
 - dBase Import of cardholder data
 - dBase Transaction Export
 - Automatic Mass Phone Programming
- Readers**
- 127 reader capacity
 - Support for all card technologies
 - Generic mag stripe reader for credit cards
- Keypads**
- Keypad activation time period scheduling
 - Card plus Keypad entry (Requires keypad)
 - Card only or Keypad only entry
 - Scrambled or non scrambled numbers
- Alarm Input Features**
- 2000 alarm monitoring capacity
 - Time, Day, and holiday shunt schedules
- This feature is included and need not be specified
 This feature or parameter must be specified when ordering the system
- Output Relays**
- Programmable by Time, days, & holidays
 - Programmable by specific dates
 - May be triggered by card transactions
 - May be triggered by alarm inputs
- System Archives and Reports**
- Stores up to 10,000 transactions
 - Reports by virtually any selection criteria
 - Card data base reports by assigned levels
 - Card data base reports alpha or number order
- Elevator Control**
- Floor specific card programming
 - Secure and public access scheduling
 - Fail safe or fail secure modes
- PARKING FEATURES**
- In-Exit Anti-Pass-Back
 - Entrances or exits may be Hard or Soft
 - Anti-Pass-Back exemption levels (valets & execs.)
 - Timed Anti-Pass-Back
 - Counter activity logging

Note: Some features must be specified at the time of the order and may be limited by other features or other factors such as the amount of optional memory in the Smart Cartridge. Always confirm the applicability of the required configuration before ordering. Features and specifications are subject to change without notice.

READERS



DIFFERENTIAL OPTICS



PROXIMITY



MAG STRIPE



BAR CODE



TOUCH



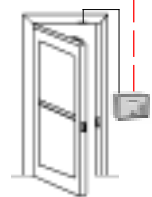
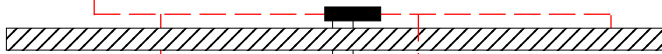
RADIO KEY

Indoor or outdoor flush and surface mount housings are available for all reader technologies with keypads optional

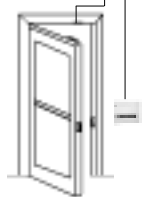
FIELD LAYOUT



The Smart Cartridge can control a single reader, or up to 127 readers connected to a two twisted pair cable. It can be programmed using a card programming deck at any reader, or it can be plugged into a "PC" directly or via modem. It contains a 10 year lithium battery for memory protection.



Command Module Mounted Inside Housing



Command Module Mounted Above Door

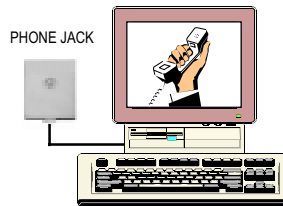


Programmable Floor Selection With Reader & Relay Module



For fully self-contained car control, all components including the reader, relay module, and Smart Cartridge may be placed inside the car eliminating the need for external wiring.

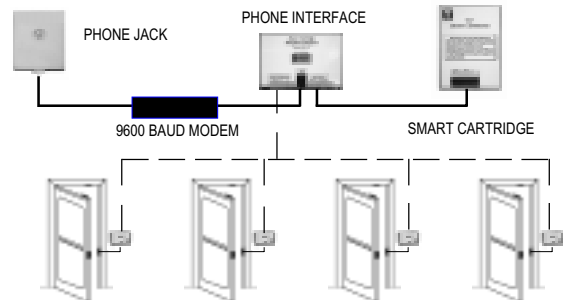
PHONE PROGRAMMING



DIAL-UP FUNCTIONS

- Instant Unlock of remote door
- Download access transaction data
- Upload programming parameters
- Upload Unlock schedules
- Void or Validate Cards
- Change Anti-Pass-Back mode
- Schedule access for specific dates
- Automatic Mass Programming

REMOTE SITE



Manufactured in the U.S.A. by:
TOYE CORPORATION
 CHATSWORTH, CALIFORNIA

Distributed by: