

# Network Controller

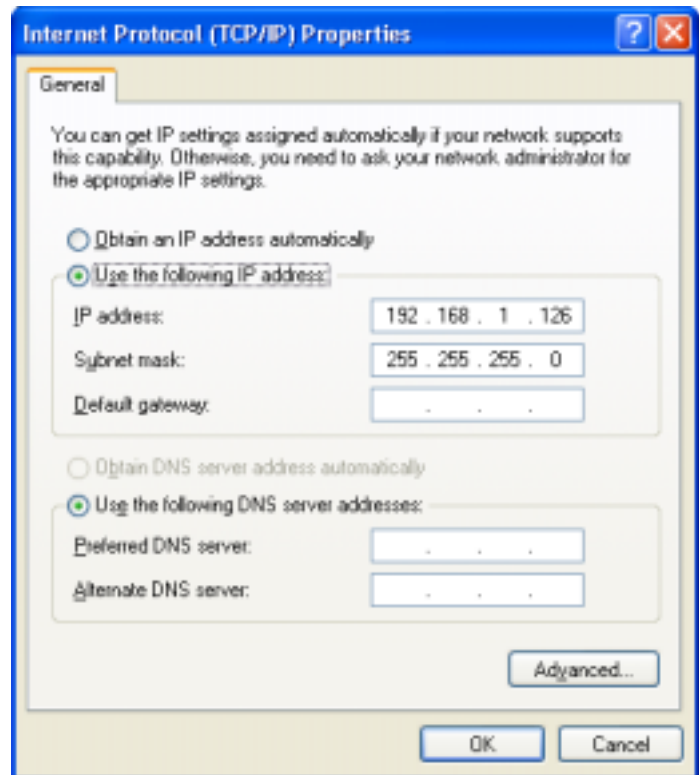
## Network Communication Setup For Windows XP

*Using A Static IP Address And direct Connect To A PC*

In order for the Access Control System to go On-Line, it is necessary to setup communication between the Network Controller and one or more PC's. For the Network Controller to be recognized by your PC, you need to configure Windows to recognize the static IP address already pre-set by the factory. It should be noted that you may change this static IP address in the Network Controller by running a set up program in the Network Controller. To do this, attach a keyboard and monitor to the Network Controller, and run: `c:\net\setup.exe`

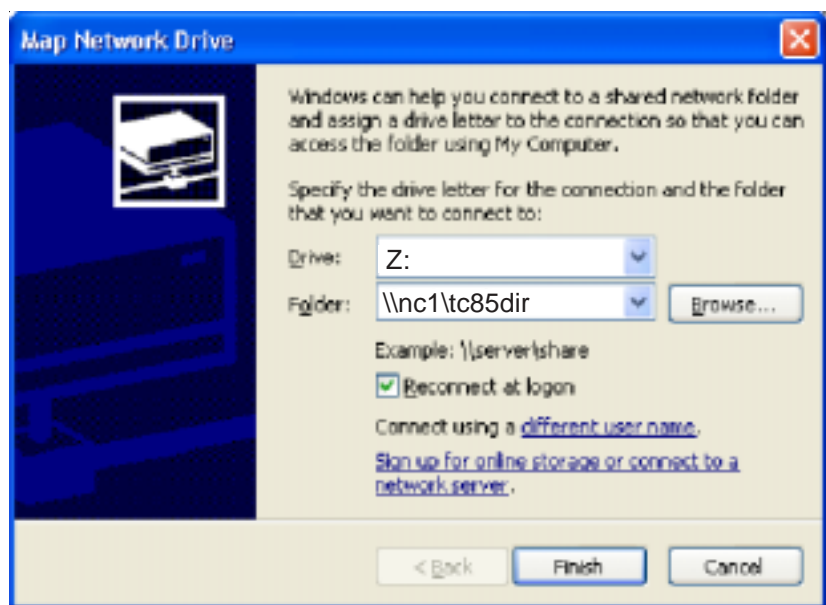
The following procedure should be followed to establish communication between your computer and the Network Controller using an ethernet crossover cable.

1. Install a dedicated ethernet card in your PC for the Network Controller
2. Create a connection in Windows:  
Press the Start Button and select "My Network Places"  
In the panel to the left, select: "Create A New Connection"  
Follow the Wizard to establish the connection to the network card that will serve the Network Controller  
Name your connection whatever you wish such as: Network Controller or Access Control System



3. You must now map a drive letter to your Network Controller so that it will display in Windows Explorer and so Access Anywhere can link to it.  
Click the Start Button, and right click My Network Places  
Right Click properties  
Right click your new Network Connection, and select properties  
Click the General Tab  
Select Internet Protocol TCP/IP  
Select properties  
Enter the values shown in the example to the right.

4. You must now map a drive to this connection  
Click the Start Button, and right click My Network Places  
Select Map Network Drive  
Accept the default drive letter (probably "z")  
Enter the folder: `\\nc1\tc85dir`



Once a drive letter has been assigned by Windows, you should now be able to go to Explore and find this drive letter. When you click on it, you will see the files contained in the Network Controller.